

# " UN PRELUDIO Y TRES SKETCH "

SALVADOR CHULIÁ HERNÁNDEZ

TROMPETA 1ª EN DO.

## - PRELUDIO -

*All° non troppo*

*f*

4 *mf*

7 *mp*

12 *f*

17 *f* *mf*

22 *mf*

V. R.



Publicaciones Chuliá

( I )

*Allegretto grazioso*

Musical score for Trompe 1st part (I), *Allegretto grazioso*. The score consists of five staves of music. The first staff (measures 27-32) starts with a 3/4 time signature, a fermata, and a dynamic marking of *f*. The second staff (measures 33-38) has a dynamic marking of *p*. The third staff (measures 39-44) has a dynamic marking of *f*. The fourth staff (measures 45-48) has a dynamic marking of *f* and includes the instruction "Sordina" with a mute symbol. The fifth staff (measures 49-52) has a dynamic marking of *f* and includes the instruction "Majestuoso Sin sordina".

( II )

*Adagio*

Musical score for Trompe 1st part (II), *Adagio*. The score consists of five staves of music. The first staff (measures 53-57) has a dynamic marking of *mf*. The second staff (measures 58-63) has a dynamic marking of *f*. The third staff (measures 64-69) has a dynamic marking of *p*. The fourth staff (measures 70-74) has a dynamic marking of *f*. The fifth staff (measures 75-79) has a dynamic marking of *f*.

80 *mp* *f*

85 **1**

91 *pp*

( III )

*Allegro* ♩ = 120

97 *ff* **1**

103

108 **2**

114

119 **3**

*Menos Tpo.*

127 *mp*

131 *f*

137 *f*

143 *f*

150 *dim.*

155 *pp* *rit.*

*Andante*

159 *mf*

*Vivo - Final*

165 *f*

171 *f*

176 *ff* *talón*

# " UN PRELUDIO Y TRES SKETCH "

SALVADOR CHULIÁ HERNÁNDEZ

TROMPETA 2ª EN DO.

## - PRELUDIO -

*All° non troppo*

*f*

4 *mf*

7 *mp*

12 *f*

17 *f* *Menos Tpo.* *mf*

21 *mf*

V. R.



( I )

*Allegretto grazioso*

27 **2** **1** **1** *sfz*

33 *p* **1**

37 *f* **3**

41 **1**

45 *V* Sordina **3**

*Majestuoso*

49 Sin sordina *f*

( II )

53 **1** **2** **1** *mf*

61 *f* *V*

66 *p* *f*

73 **1** **1**

80 *mp* **1** *f*

86 *f*

92 *pp*

( III )

*Allegro* ♩ = 120

97 *ff*

102

107 **1**

112

116 **1**

121

125 *Menos tpo.* **2** *p* V. R.

131 *Sordina* *Sin sordina*

*p* 3

135

140

145

150

*dim*

155

*pp* *rit.*

*Andante*

159

*p* *mf*

*Vivo - Final*

165

*f*

170

176

*talón* *ff*



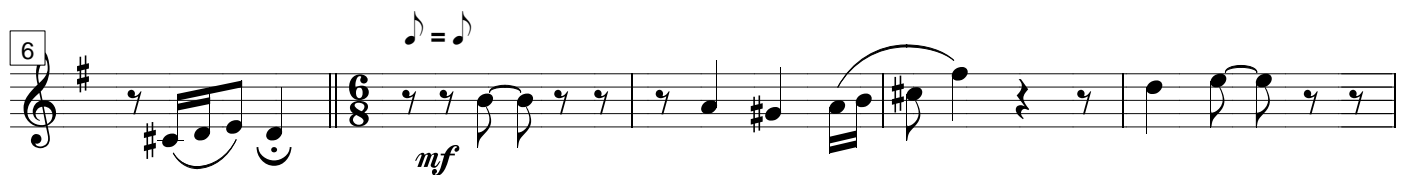
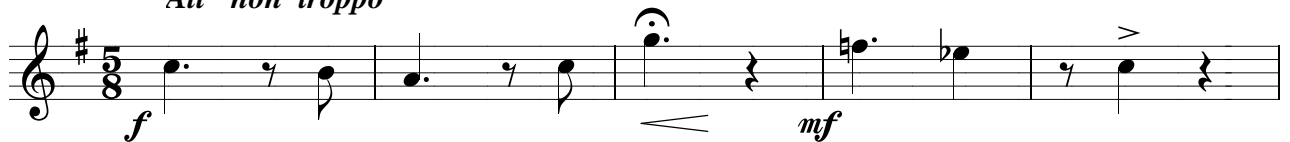
# " UN PRELUDIO Y TRES SKETCH "

SALVADOR CHULIÁ HERNÁNDEZ

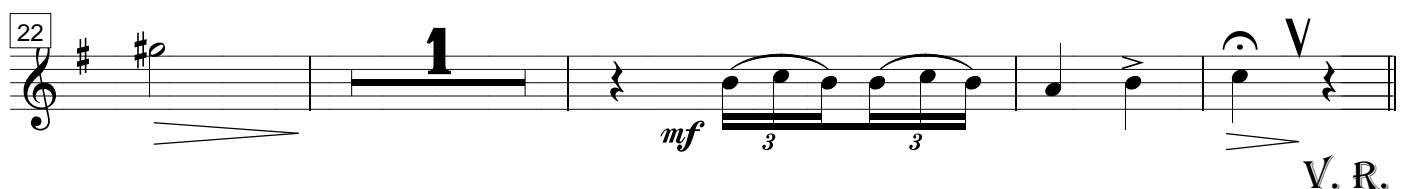
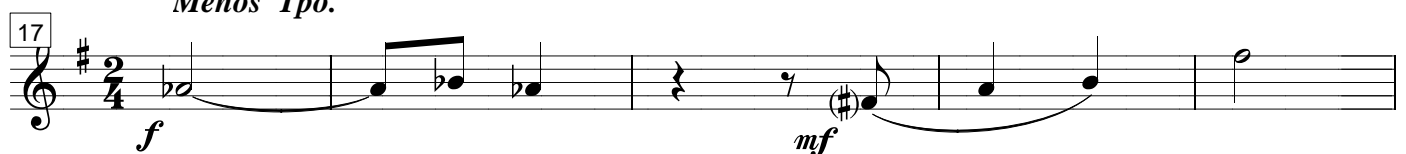
TROMPA EN FA

## - PRELUDIO -

*All° non troppo*



*Menos Tpo.*



V. R.



( I )

*Allegretto grazioso*

27 *p* *f*

31 *sfz* *p*

36 *f*

41 *V*

*Majestuoso*

47 *Sordina* *Sin sordina* *f*

( II )

*Adagio*

53 *mf*

59 *f* *V*

66 *p* *f*

73

80 *mp* *f* **3**

87 **3**

92 *pp* **3**

( III )

*Allegro* ♩ = 120

97 *ff* **1**

104 *gliss.*

110

116

123 **3** **3**

128 *Menos tpo.* *p* *Sordina* *sin sordina* **1** **1**

134 *p* *f*

138 **1**

143

147

151 *dim*

155 *pp* *rit.*

*Andante*

159 **1** *p* *mf*

*Vivo - Final*

165 *f*

171 **1**

176 **2** *talón* *ff*

# " UN PRELUDIO Y TRES SKETCH "

SALVADOR CHULIÁ HERNÁNDEZ

TROMBÓN EN DO

## - PRELUDIO -

*All° non troppo*

*f* *mf*

*mf* *mp*

*f*

*Menos tpo.*

*f* *mf*

*sfz* *mf*

V. R.



( I )

*Allegretto grazioso*

27 *p* *f*

31 *sfz* *mp* *gliss.* *gliss.*

36 *f* **1**

42 *gliss.* **V**

47 **1** *Sordina* *Sin sordina* *gliss.* *f*

( II )

*Adagio*

53 *mf* **1** **1**

59 *f* *gliss.* **V**

66 *p* *f*

72 *f* **1** **1** **1**

80 *mp* gliss. *f*

86 gliss. gliss. 3 3

91 *pp* gliss. gliss.

( III )

*Allegro* ♩ = 120

97 *ff*

103 gliss. gliss. 2

110 gliss. gliss. 2

117 3 3 3

122 3

126 *Menos Tpo.* *p* 1







( I )

*Allegretto grazioso*

27

*p* *f*

31

*sfz* *p*

36

*p* *f*

40

*p* *gliss.* *p* *V*

47

Sordina

*f*

*Majestuoso*

Sin sordina

*f*

( II )

*Adagio*

53

*mf*

58

*p* *f*

63

*p* *V*

68

*p*

74 **1**  
*mp*

81 *f* gliss.

86

91 *pp*

( III )

*Allegro* ♩ = 120

97 *ff* <sup>3</sup>

103

108 gliss.

113

119

124 *Menos Tpo.* **1**  
*p* V. R.

130

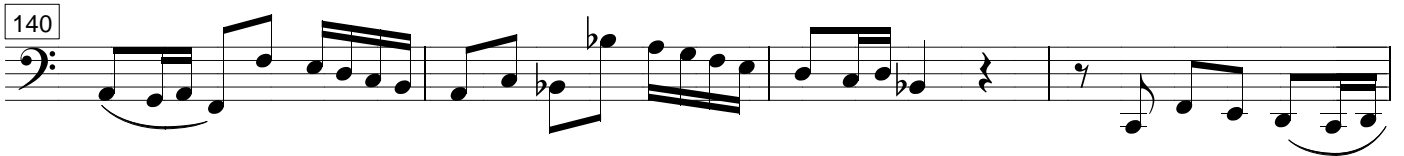


135

*f*



140



144



148



152

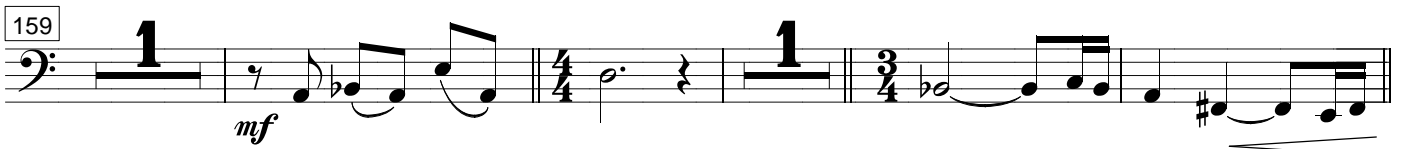
*dim* *pp* *rit.*



*Andante*

159

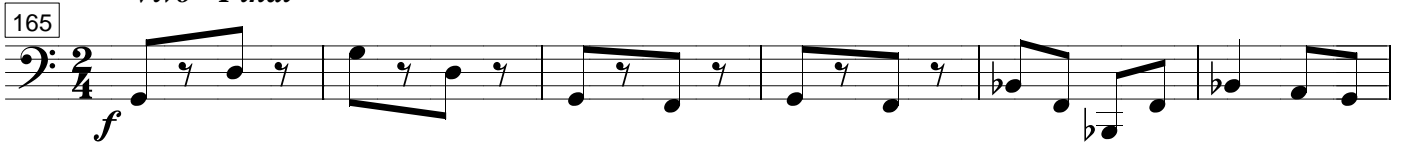
*mf*



*Vivo - Final*

165

*f*



171



176

*ff* *talón* *E. Gosp.*

