

# Para Rebeca y Claudia

## Pasodoble de Concierto

Violoncelos

Salvador Chuliá Hernández

2 *a 2 arco*  
*ff*

9 *mf*

16 (como 2<sup>a</sup>)  
1 *p*

24 1. 4

34 2. *ff*

40 2. 3 3 3

46 *f*

52 3.

58 3

V. R.

67 *f*

74 *p* **TRÍO.**

82

89

97

105 *p*

113 ④ *ff*

122 ⑤ *ff*

131

140

148

# Para Rebeca y Claudia

## Pasodoble de Concierto

Contrabajo (DO)

Salvador Chuliá Hernández

2 arco  
*ff*

10  
*mf*

18  
*pp*

1

26  
1.

34  
2.  
*ff*  
*ff*

2

43

52  
3

61

70  
3



78 **TRÍO.**



86



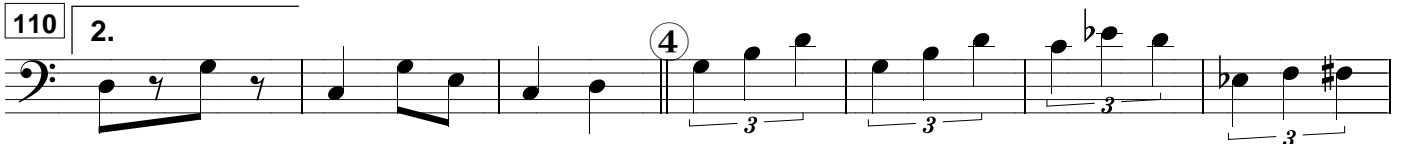
94



102



110



117



125



133



140



148



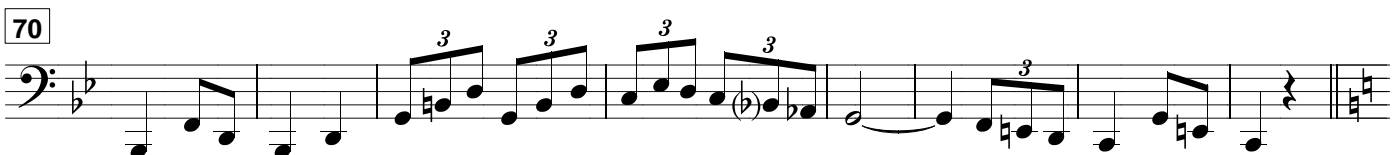
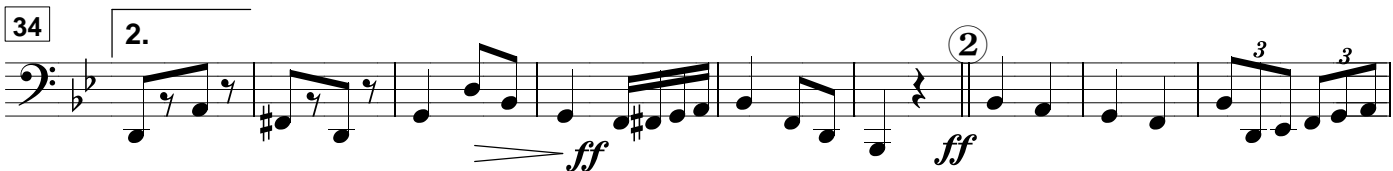
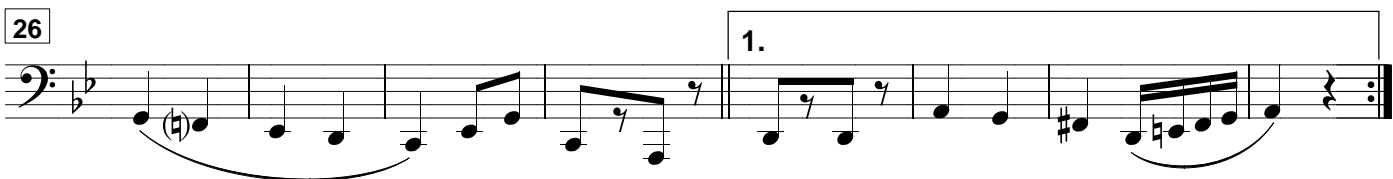
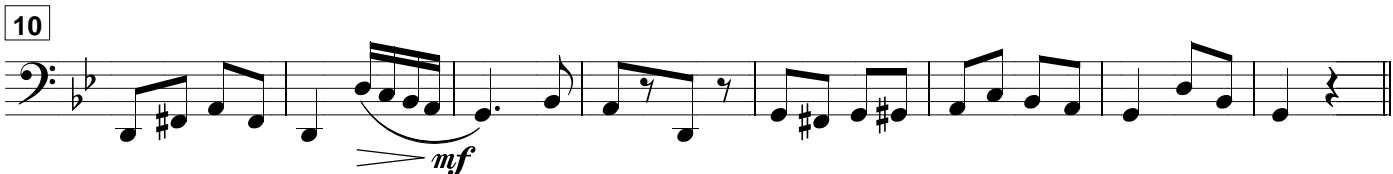
*E. Gosp.*

# Para Rebeca y Claudia

## Pasodoble de Concierto

Bajo 1° (DO)

Salvador Chuliá Hernández



78 **TRÍO.**

*pp*

Musical staff for measure 78, starting with a double bar line and repeat sign. The staff contains a sequence of eighth and sixteenth notes with accents.

86

Musical staff for measure 86, featuring a series of eighth notes and a sixteenth-note triplet.

94

Musical staff for measure 94, consisting of eighth notes with accents.

102

Musical staff for measure 102, including a first ending bracket labeled '1.' and a double bar line.

110 2.

Musical staff for measure 110, featuring a second ending bracket labeled '2.', a circled '4', and triplets.

117

Musical staff for measure 117, including a circled '5' and a dynamic marking of *ff*.

125

Musical staff for measure 125, consisting of eighth notes with accents.

133

Musical staff for measure 133, featuring eighth notes and a sixteenth-note triplet.

140

Musical staff for measure 140, consisting of eighth notes with accents.

148

Musical staff for measure 148, including a circled '4' and a double bar line.

*E. Gosp.*



# Para Rebeca y Claudia

## Pasodoble de Concierto

Bajo 2º (DO)

Salvador Chuliá Hernández

2

*ff*

Musical notation for measures 1-9 in bass clef, 2/4 time, key of B-flat. Measure 1 has a '2' above it. Dynamics include *ff*.

10

*mf*

Musical notation for measures 10-17 in bass clef. Dynamics include *mf*.

18

1

*pp*

Musical notation for measures 18-25 in bass clef. Measure 18 has a circled '1' above it. Dynamics include *pp*.

26

1.

Musical notation for measures 26-33 in bass clef. Measure 26 has a circled '1' above it. First ending bracket labeled '1.' spans measures 26-33.

34

2.

2

3

*ff*

Musical notation for measures 34-42 in bass clef. Measure 34 has a circled '2' above it. Second ending bracket labeled '2.' spans measures 34-42. Dynamics include *ff*.

43

Musical notation for measures 43-51 in bass clef.

52

3

Musical notation for measures 52-60 in bass clef. Measure 52 has a circled '3' above it.

61

Musical notation for measures 61-69 in bass clef.

70

3

Musical notation for measures 70-78 in bass clef. Measure 70 has a circled '3' above it.

78 **TRÍO.**

Musical staff 78, bass clef, starting with a double bar line and repeat sign. The piece is marked *pp*. The melody consists of eighth and sixteenth notes with grace notes.

86

Musical staff 86, bass clef. The melody continues with eighth and sixteenth notes.

94

Musical staff 94, bass clef. The melody continues with eighth and sixteenth notes.

102

Musical staff 102, bass clef. The melody continues with eighth and sixteenth notes. A first ending bracket labeled "1." spans the final two measures.

110 2.

Musical staff 110, bass clef. The melody continues with eighth and sixteenth notes. A second ending bracket labeled "2." spans the first two measures. A circled "4" is above a measure, followed by two triplets of eighth notes. The piece is marked *ff*.

117

Musical staff 117, bass clef. The melody continues with eighth and sixteenth notes. A circled "5" is above a measure. The piece is marked *ff*.

125

Musical staff 125, bass clef. The melody continues with eighth and sixteenth notes.

133

Musical staff 133, bass clef. The melody continues with eighth and sixteenth notes.

140

Musical staff 140, bass clef. The melody continues with eighth and sixteenth notes.

148

Musical staff 148, bass clef. The melody continues with eighth and sixteenth notes. The piece ends with a double bar line.

E. Gosp.



# Para Rebeca y Claudia

## Pasodoble de Concierto

Timbales

Salvador Chuliá Hernández

SOL-RE-FA

12

40

2 Sib-FA-DO-SOL

50

59

68

78

TRÍO.

29

78

119

129

138

147

E. Gosp.



# Para Rebeca y Claudia

## Pasodoble de Concierto

C a j a

Salvador Chuliá Hernández

2/4

*p* *ff* *mf*

13

1

*p*

22

30

1. 2.

*ff*

40

2

*ff*

3 3

48

3

*f*

56

64

3

72

78 **TRÍO.**

Musical notation for measure 78, starting with a double bar line and a repeat sign. The notation includes eighth notes, quarter notes, and rests, with a *pp* dynamic marking below the staff.

86

Musical notation for measure 86, featuring eighth notes, quarter notes, and rests, with first, second, and third endings indicated by numbers 1, 2, and 3 above the staff.

95

Musical notation for measure 95, featuring eighth notes, quarter notes, and rests.

104

Musical notation for measure 104, featuring first and second endings indicated by numbers 1. and 2. above the staff, and a *ff* dynamic marking at the end.

113

Musical notation for measure 113, featuring eighth notes, quarter notes, and rests, with a circled number 4 above the first measure and a *3* (triple) marking below the first two measures.

122

Musical notation for measure 122, featuring eighth notes, quarter notes, and rests, with a circled number 5 above the first measure and a *ff* dynamic marking below the staff.

130

Musical notation for measure 130, featuring eighth notes, quarter notes, and rests, with first, second, and third endings indicated by numbers 2 and 3 above the staff.

139

Musical notation for measure 139, featuring eighth notes, quarter notes, and rests, with first, second, and third endings indicated by numbers 2 and 3 above the staff.

148

Musical notation for measure 148, featuring eighth notes, quarter notes, and rests, with first, second, and third endings indicated by numbers 2 and 3 above the staff.

*E. Gosp.*

# Para Rebeca y Claudia

## Pasodoble de Concierto

Bombo y Platos

Salvador Chuliá Hernández

*Pº colgante*  
*Bº*  
*p* *ff* *ff* *Bº* *mf*  
**14**  
**42**  
**52** **3** *Tutti*  
**60**  
**72** *TRÍO.* **29** **1. 3** **2. 3**  
**113** **4** *Tutti* **5** *ff* *ff*  
**125**  
**136**  
**146**

*E. Gosp.*